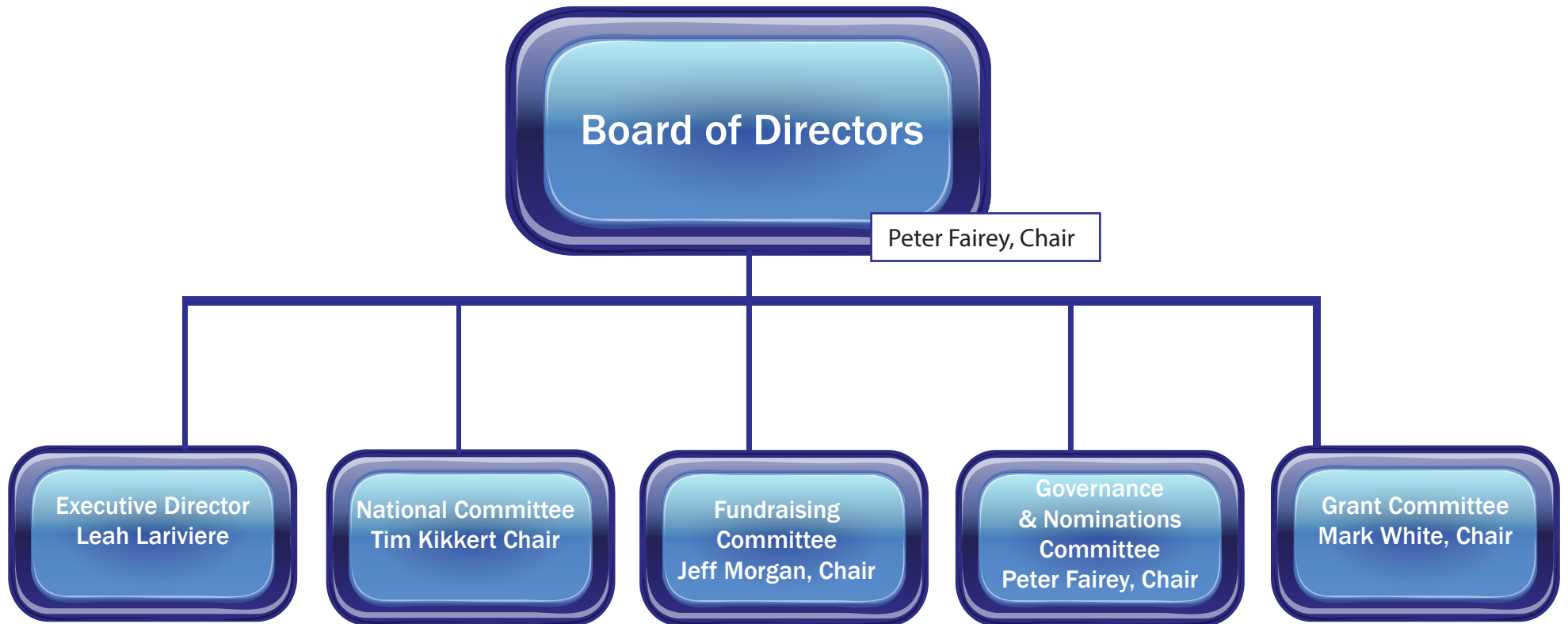
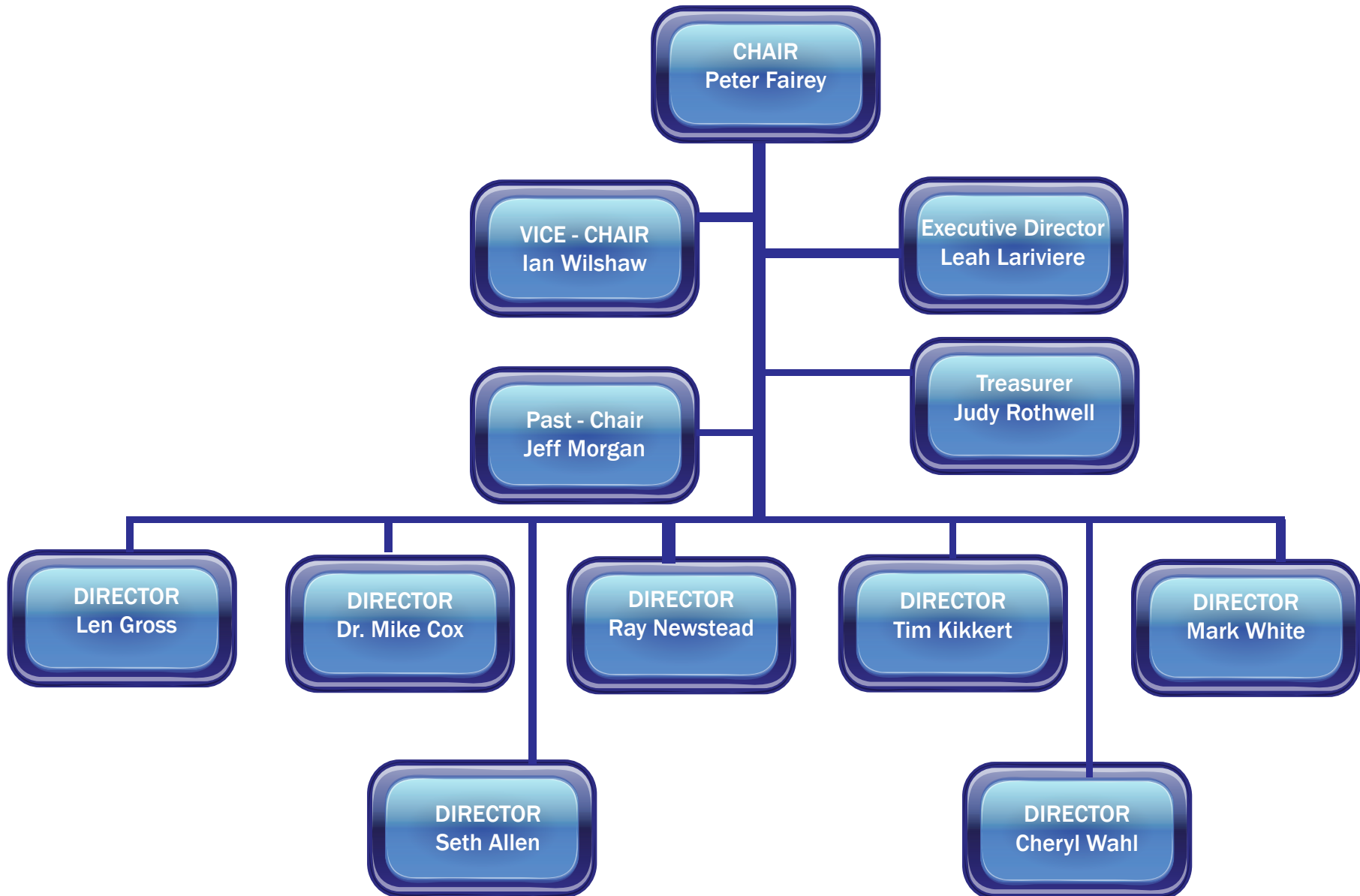


Prostate Cancer Foundation BC



PCFBC Board



STAFF

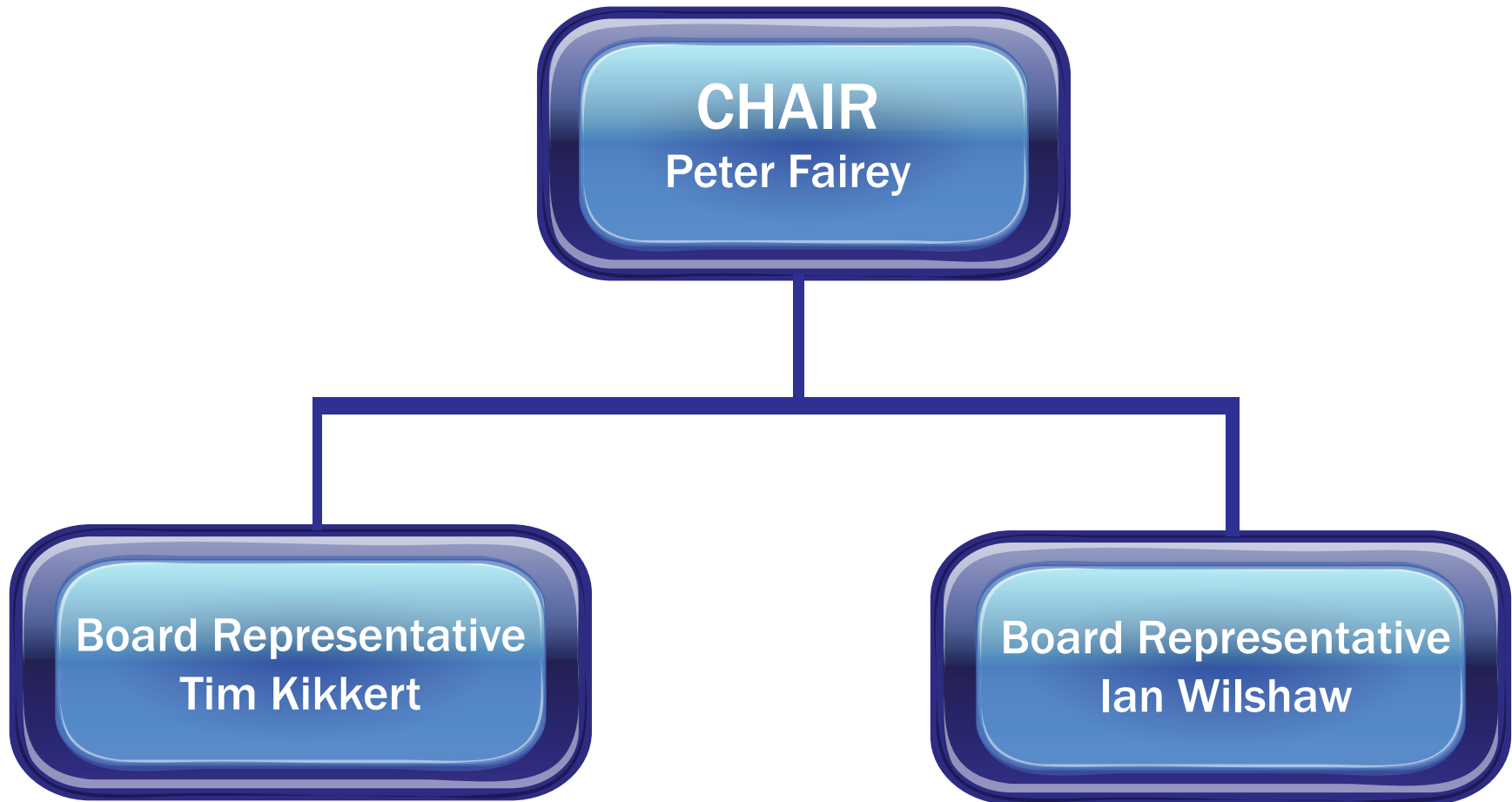
Leah Lariviere
Executive Director

Richelle Green
Support Services
Manager

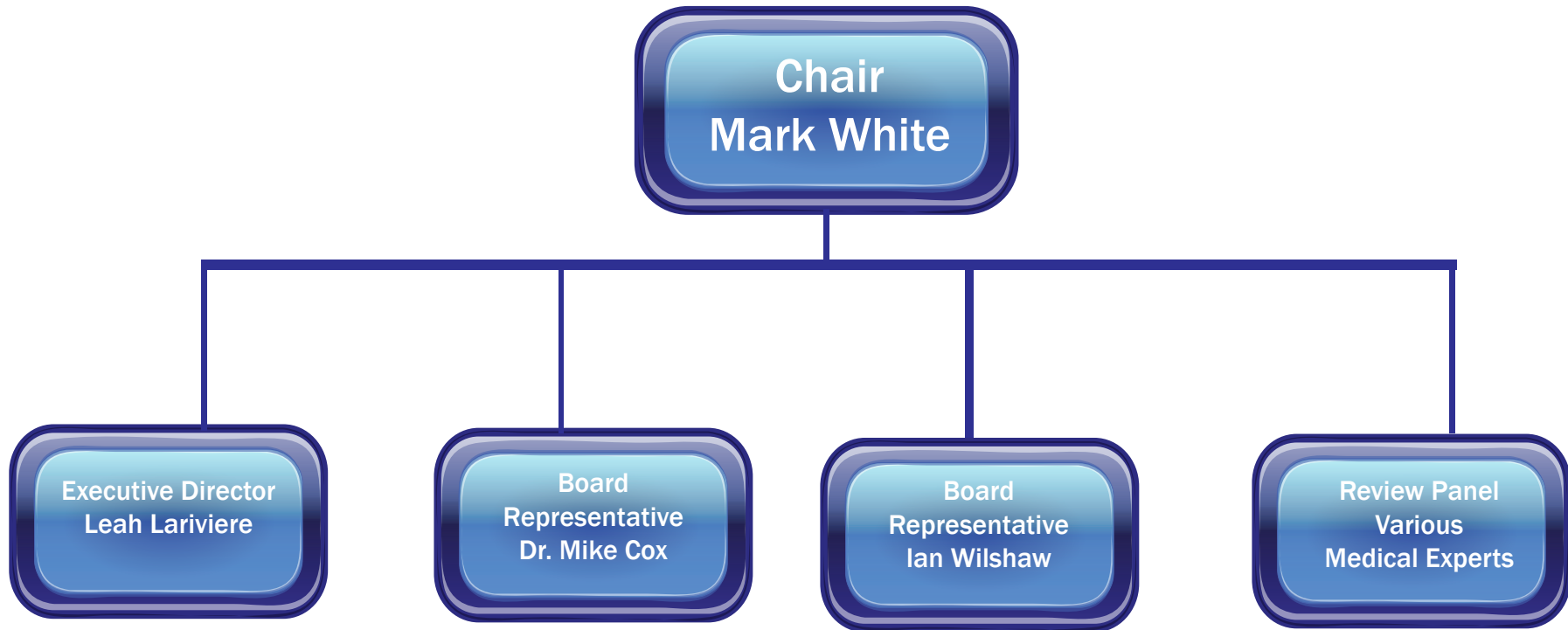
Shelley Werk
Donor Relations

Nicole Sirokman
Event Manager

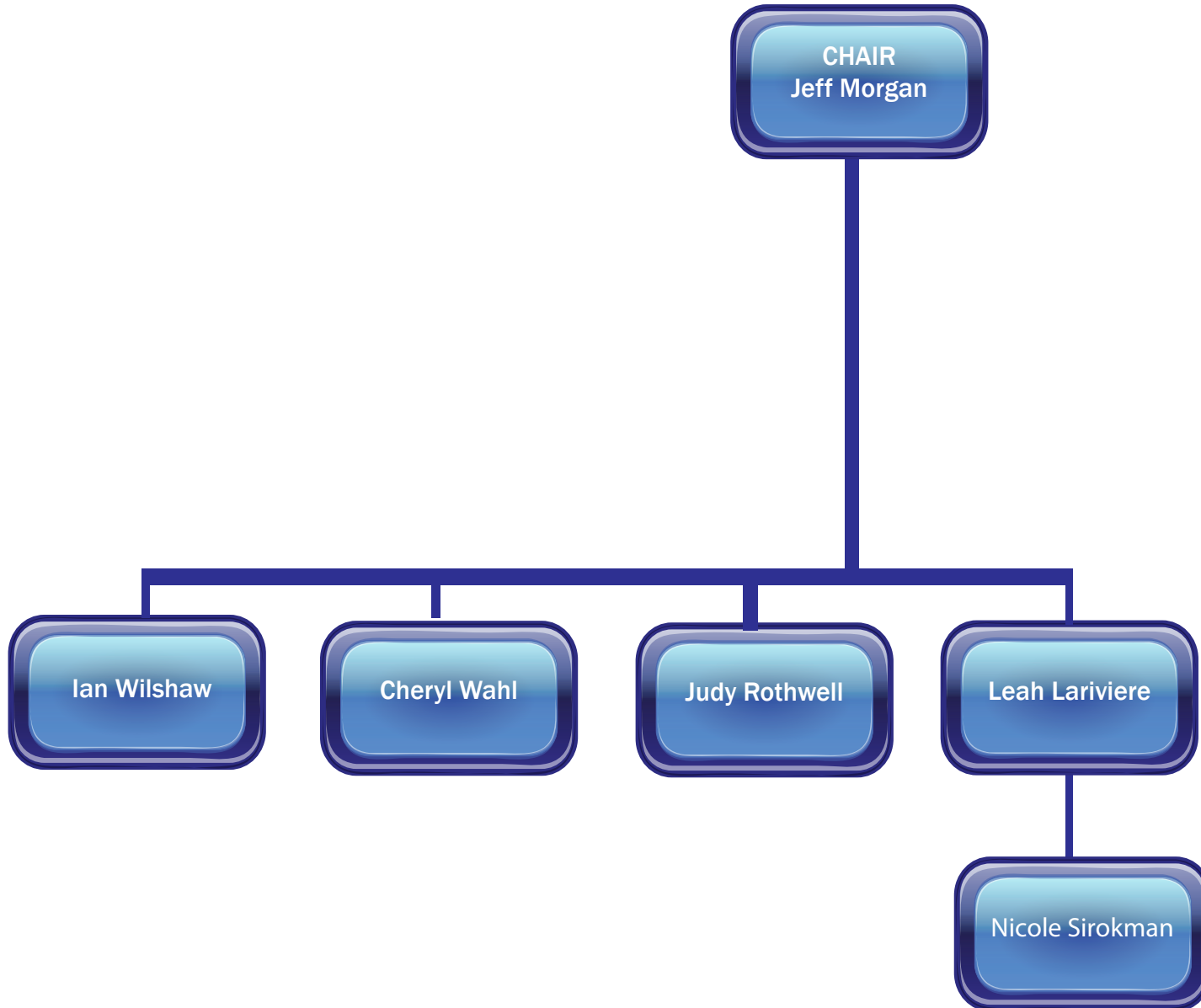
Governance & Nominations Committee



Grant Committee



Fundraising Committee



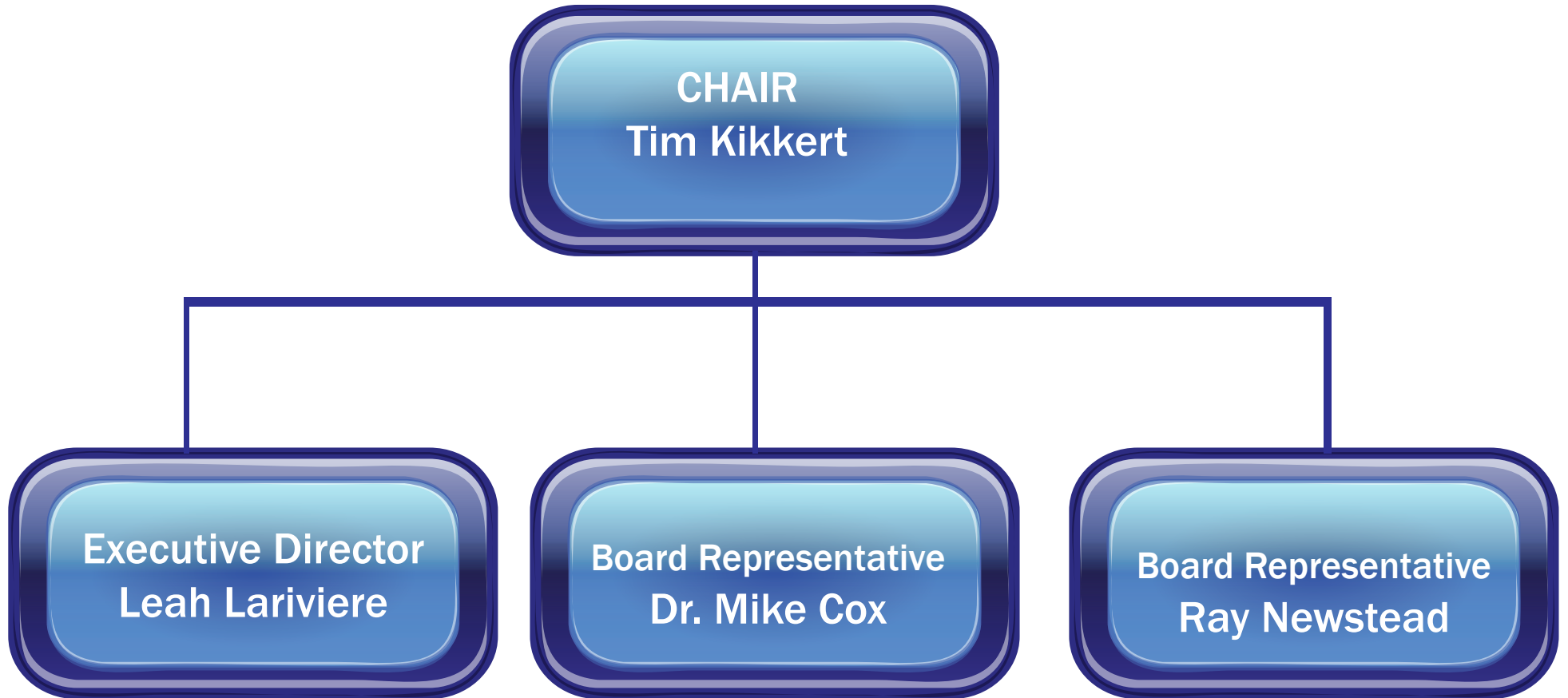
National Support Committee

CHAIR
Tim Kikkert

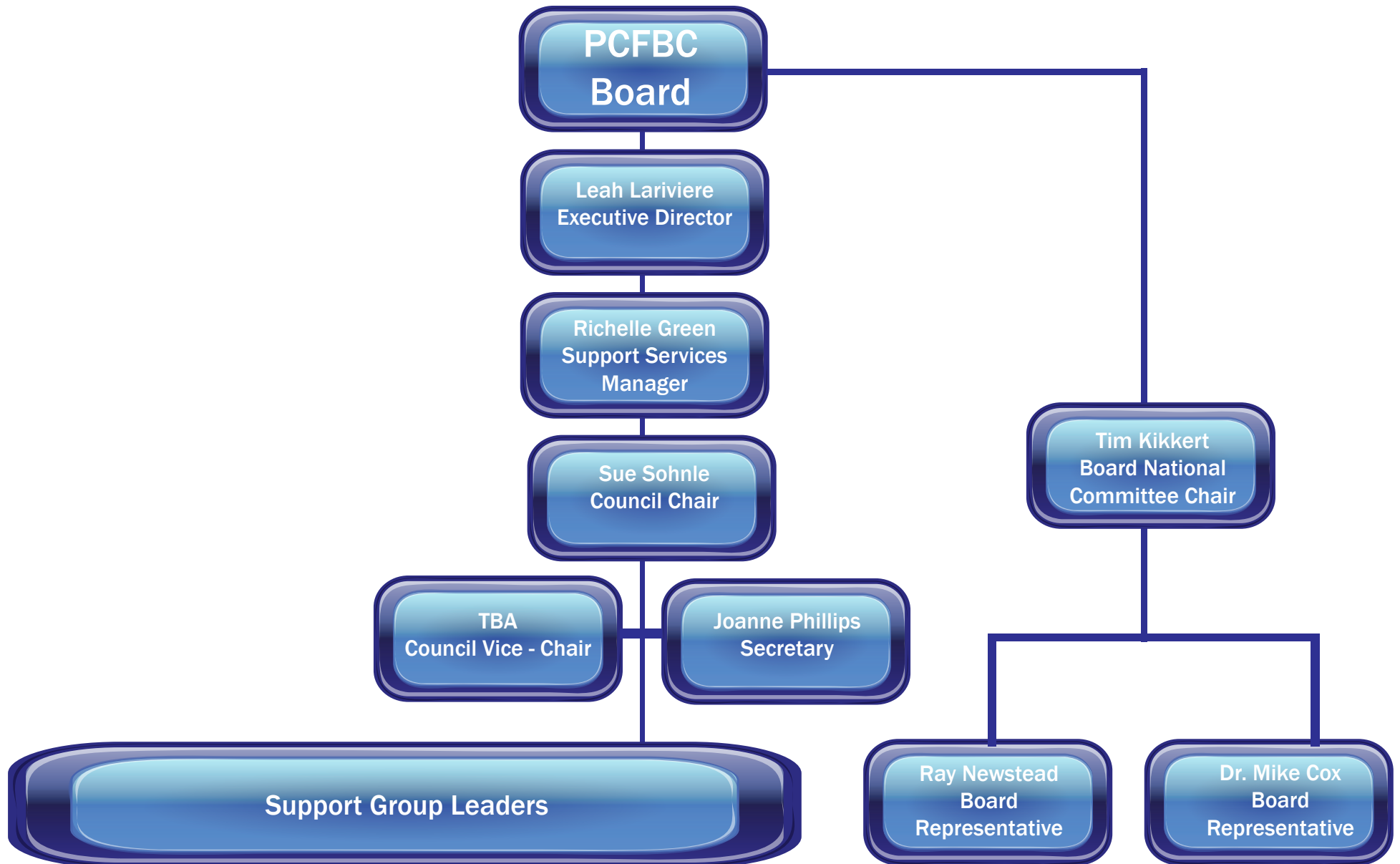
Executive Director
Leah Lariviere

Board Representative
Dr. Mike Cox

Board Representative
Ray Newstead



National Prostate Cancer Support Council



BC Prostate Cancer Support Council

